



Eidgenössische Technische Hochschule Zürich
Swiss Federal Institute of Technology Zurich

IRL – Institute for Spatial and Landscape Planning
Chair of Spatial Development

ETH Zürich
Prof. Dr. sc. techn. Bernd Scholl
Stefano-Francini-Platz 5
HIL H41.3
CH-8093 Zurich, Switzerland

Tel.: +41 44 633 30 03
Fax: +41 44 633 10 98
bscholl@ethz.ch
www.raumentwicklung.ethz.ch

First Report

CODE Athens

Railways & City Development

19.December 2014

Stage I:
Diagnose the Problem: Students Contribution

Project leader: Prof. Dr. Bernd Scholl
Scientific assistants: Dr. Ana Peric and Mahdokht Soltaniehha

Abstract

Synopsis

Athens Central Railway Station, Stathmos Larrisis, is the main node of the triangle railway network between Patras, Athens and Thessaloniki. It is also the southern gateway to the European Corridor orient/east-med, Vienna – Athens. But, the station should be upgraded to more than an eight-track railway infrastructure with an electrified connection to SKA (the northern railway station of Athens agglomeration region) and the passenger harbour of Piraeus. The link from SKA – via Stathmos Larrisis – to Piraeus forms a corridor that has strategic importance for the future urban development in Athens.

For some years, the upgrade of the Athens Central Station has been put on hold. Also, several brownfield sites exist along this corridor, which have potentials for renewal of the important areas in Athens. Furthermore, the urban fabric in the catchment area of Stathmos Lasrrisis and its accessibility need to be improved. Currently, these are insufficient management and planning programs for this railway network as well as the city of Athens development in local, national and European scales.

Project Significance

Nowadays, Greece is considered as one of the most important strategic transportation nodes on the European continent. The project is significant for two reasons:

1. Since Greece is the most southern European state, the strengthening of its strategic position would contribute to the balanced development between north and south of Europe, further territorial cohesion and socio-economic competitiveness.
2. Greece has potential for the development of numerous intermodal transportation nodes. More precisely, the benefits of investment in the Greek railway transportation network certainly will have a positive effect on the improvement of passengers and freight capacities of other transport modes, mainly maritime transportation.

Methodology

The project will be conducted in several steps with various methods, consisting field trips, interviews, literature review, symposium and workshops, and focus groups. Also a test planning method is possible for future. Three chairs of planning from ETH Zurich, Technical University of Athens (NTU) and University of Patras take part in the initial steps of the project. The organisation team developed strong interactions with the national railway company (Hellenic Railways, OSE), and also local government.

Key Accomplishments

An international symposium 'Rail&City' – April 19-20, 2015, Athens – is planned to gather the decision makers and experts as well as students and citizens to stimulate public debate on the challenging situation in Athens. This exchange should provide a solid basis for a better understanding of the integrated planning approach, which could make a breakthrough for any innovative solutions accepted by the inhabitants, the politicians and the various institutions and actors that will be involved.

Acknowledgement

Deepest gratitude is due to the sponsor of this project, AS&P (Albert Speer and Partner GmbH) for the great inspiration and providing the financial means.

Team members:

> Swiss Federal Institute of Technology Zurich

- **Prof. Dr. Bernd Scholl**
Professor of Spatial Development | ETH, IRL
- **Dr. Rolf Signer**
Lecturer and Senior Researcher | ETH, IRL
- **Yvonne Largiader**
Secretary of the Institute | ETH, IRL
- **Dr. Ana Peric**
Postdoctoral Fellow | ETH, IRL
- **Mahdokht Soltaniehha**
Doctoral Candidate | ETH, IRL
- **Timon Furrer**
Graphic Designer | ETH, IRL

> Technical University of Athens (NTU Athens)

- **Prof. Dr. Konstantinos Moraitis**
Professor of Architecture

> University of Patras

- **Prof. Dr. Vassilis Pappas**
Assoc. Professor of Spatial Planning

Table of Contents

Chapt1: Introduction	5
Motivation of the Project	5
Current Status	5
Project Objectives and Specifications	5
Significance of the Project	6
Team Work	6
Gantt Chart	6
Chapter 2: Preparations	7
2.1 Field Trip – Athens	7
2.2 Conference Paper	7
2.3 MAS Course Preparation: Task Definition	8
2.4 MAS Course: Introductory Presentation	8
Chapter 3: Expert Meeting in Zurich.....	9
Chapter 4: Athens Symposium.....	11
Chapter 5: Future Works	14
5.1 Focus Groups	14
5.2 Athens Joint Seminar Week	14

Chapter 1: Introduction

Motivation

The overall aim of this project is to signify the importance of railway development in Athens as one of the most geostrategic locations in Europe. It is significant for two main reasons. First, since Greece is the most southern European state, the strengthening of its strategic position should contribute to the balanced development between north and south of Europe, further territorial cohesion, and socio-economic competitiveness. During the past two decades, European Commission has initiated numerous policies regarding the territorial cohesion and more equalized development. So far, these policies are applied to improve the infrastructure as one of the essential elements of development between east and west of Europe and also from northern to southern states like Italy and Spain.

Second, Greece has a great potential for the development of numerous intermodal transportation nodes, by developing railways, maritime transit, airport and roads. This is particularly an important item for the capital city of Athens, where the city is head-to-head to the three continents and could develop a good access to the east, central and other southern European states.

Furthermore, Greece has been facing challenges of great political and economic importance since 2007, known as Greek Depression. Therefore, the country is seeking for a rapid remedy to draw itself out of crisis, and to avoid the further consequences of existing socio-economic challenges. Our major motivation for this project is to expose the topic of railway development to the discussion, as one of the most reliable solutions to increase the accessibility of the region and the mobility of the population, along with spatial development mainly in the capital metropolitan region.

Current status

Since March 2014, the project has been started with a field trip to the region and will be continued to hold an international symposium in April 2015 in Athens, Greece. The results of this project will be used in educational joint program between three universities of ETH Zurich, the Technical University of Athens (NTU) and the University of Patras.

At present, the initial phase of the project including field trip and expert meeting has been completed. Also, the preparations for the 'CODE Athens: International Symposium' in April 2015 has been fixed and the trip for project team and students from ETH Zurich to Athens has been planned. For more details, please consider the Gantt chart at the end of this chapter.

Project Objectives & Specifications

In order to achieve the abovementioned aim, our team proposed a multi-step program to attract the attention of local and European experts and governments, and to involve them in the different project processes.

The specific objectives of this project is (1) to provide the information and materials for further practical actions, and (2) possibly to prepare an international Test-Planning procedure. However, an international symposium 'Rail&City' will be held to stimulate public debate on the challenging situation in Athens. This exchange should provide a solid basis for a better understanding of the integrated planning approach, which could make a breakthrough for any innovative solutions accepted by the inhabitants, the politicians and the various institutions and actors that will be involved.

Significance of the Project

Nowadays, Greece is considered as one of the most important strategic transportation nodes on the European continent. The project is significant for two reasons:

First, since Greece is the most southern European state, the strengthening of its strategic position would contribute to the balanced development between north and south of Europe, further territorial cohesion and socio-economic competitiveness.

Second, Greece has potential for the development of numerous intermodal transportation nodes. More precisely, the benefits of investment in the Greek railway transportation network certainly will have a positive effect on the improvement of passengers and freight capacities of other transport modes, mainly maritime transportation.

Team Work

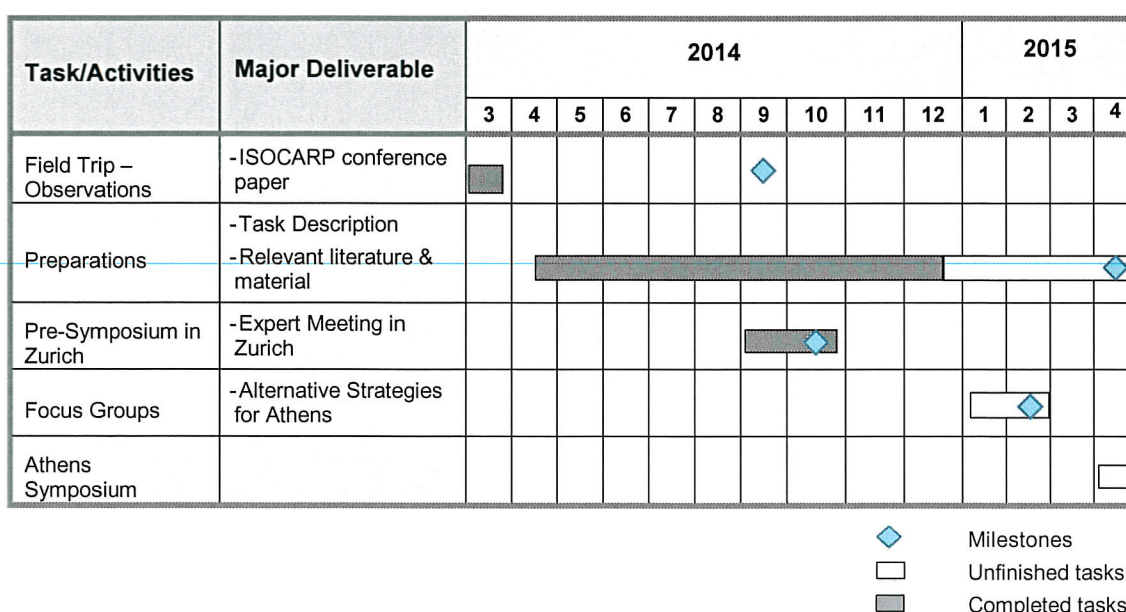
The organisation team mainly consists of scientific staff of the Chair of Spatial Planning and Development (SPD), at ETH Zurich under the supervision of Prof. Dr. Bernd Scholl. Dr. Rolf Signer as senior researcher, Dr. Ana Peric as postdoctoral fellow and Ms. Mahdokht Soltaniehha as PhD candidate take part throughout the entire project. As the Greek partner of SPD, Ms. Irini Ferezadou has the main role in coordination of the field trips, interactions with local governments and experts, and organisation of events in Athens.

Academic Exchanges

The planning chair of ETH, together with the Technical University of Athens (NTU) and the University of Patras, have therefore collaborated to start the CODE Athens initiative to bring the new ideas for possible solutions and to stimulate the integrated development of city and railways in Athens in a longer perspective. As experienced by some other European metropolitan areas, such as Berlin, Madrid, Vienna and Zurich, integrated railway and urban development can serve as an engine for strategic investments, often realised in public-private partnership.

Professor Dr. Kostas Moraitis (the Technical University of Athens) and Professor Vassilis Pappas (University of Patras) are the project scientific partners from the Greek Universities. For proposing the practical solutions, a joint program has been designed for the students from ETH Zurich, NTU and the University of Patras in Spring 2015.

Gantt Chart



Chapter 2: Preparations

2.1 Field Trip – Athens

Content: The main aim of this trip was to more comprehensively investigate the current situation of the city, and also to manage the initial organizational matters for the international symposium in April 2015. In the field trip, the team was accompanied by a representative of the Hellenic Railways (OSE) to visit the railway corridor from Athens to Piraeus, and important railway stations as well as the surrounding settlement structure.

Date: Saturday, 08.March.2014 – Tuesday, 11.March.2014

Participants:

- **Prof. Dr. B. Scholl**
ETH, IRL
- **I. Frezadou**
Architect & Spatial Planner
- **Evangelos Christogiannis**
Civil Eng., Hellenic Railways|OSE
- **Dr. A. Peric**
ETH, IRL
- **M. Soltaniehha**
ETH, IRL
- **Friedbert Greif**
Managing Partner, AS&P

2.2 Conference Paper: ISOCARP 50th Annual Congress, Gdynia, Poland

Content: The 50th annual Congress of ISOCARP in Gdynia was held on the topic 'Urban Transformations – Cities and Water'. The team participated in the congress and provided an effective presentation on the paper of "Port of Piraeus: Industrial Zone or Urban Continuity". The paper has been peer-reviewed and published in the official congress proceeding.

Date: Saturday, 23.September.2014 – Friday, 26.September.2014

Title: "Port of Piraeus: Industrial Zone or Urban Continuity"

Authors:

- **M. Soltaniehha**
ETH, IRL
- **Prof. Dr. B. Scholl**
ETH, IRL
- **Dr. A. Peric**
ETH, IRL

2.3 MAS Course: Task Description

Content: The Master of Advanced Studies (MAS) program in Spatial Planning at ETH Zurich focuses on the complex social, economic, and ecological issues of the living environment. The candidates are taught how to identify and comprehend the problems in spatial development as well as develop suitable solution strategies. The program constitutes two years of lectures and seminars, interdisciplinary group projects, 2 study trips, individual in-depth study, as well as two individual projects at the end of each year. The current project of CODE Athens is the second study trip for MAS program 2013-2015. The study trip has two parts: first trip for the 'International Symposium of CODE Athens' in April 2015; second trip for the 'Joint Seminar Week' in June 2015. This course is a joint program with the Master program in Architecture at Technical University of Athens and also Bachelor program in Architecture at the University of Patras.

A task description has been provided for the students of this joint program to increase their knowledge about the history of railway and spatial development in Greece and to better support them with understanding the current problem. The manual of 'Task Description' is on progress and is based on the initial investigations in March 2014 and discussions in 'CODE Athens: Expert Meeting in Zurich'. The manual will be distributed to the students in 'Joint Seminar Week' in June 2015.

Date: March.2014 – March.2015 (on progress)

Organisation Team Members:

- **Prof. Dr. B. Scholl**
ETH, IRL
- **Dr. A. Peric**
ETH, IRL
- **Timon Furrer**
Graphic Designer | ETH, IRL
- **Dr. R. Signer**
ETH, IRL
- **M. Soltaniehha**
ETH, IRL

2.4 MAS Course: Introductory Presentation

Content: An introductory presentation was provided for the MAS students in Zurich in order to deliver the topic, the forthcoming course in Spring 2015, and important dates for the trips and events. Having the students' confirmation, the flight tickets are booked and the accommodation are reserved.

Date: 24.November.2014

Prepared by: Dr. Ana Peric

Field trip organization by: Yvonne Largiader

Chapter 3: Expert Meeting in Zurich

Content: In this chapter, the detailed information on the event 'CODE Athens: Expert Meeting in Zurich' has been provided. The main accomplishments of this event was to review the draft version of 'Task Description' manual, and to manage the organizational issues for the 'ICODE Athens: International Symposium' in April 2015.

Date: Wednesday, 17.September.2014 – Friday, 19.September.2014

Participants:

- | | |
|--|---|
| - Prof. Dr. B. Scholl
<i>ETH, IRL</i> | - Dr. R. Signer
<i>ETH, IRL</i> |
| - I. Frezadou
<i>Architect & Spatial Planner</i> | - P. Noser
<i>Former Deputy Director, Office for Urban Planning, City of Zurich</i> |
| - Prof. Dr. K. Moraitis
<i>NTU Athens</i> | - H. Vetsch
<i>Railway expert</i> |
| - Prof. Dr. V. Pappas
<i>University of Patras</i> | - Dr. A. Peric
<i>ETH, IRL</i> |
| - I. Kalogianni
<i>City Planning & Building Department, City of Athens</i> | - M. Soltaniehha
<i>ETH, IRL</i> |
| - G. Pantelas
<i>Directorate of Strategic Planning and Development, OSE</i> | - Y. Largiader
<i>Secretary of the ETH, IRL</i> |

Program:

Wednesday, 17 September 2014

Afternoon **Arrival to Zurich – Accommodation: Hotel Rex**
Weinbergstrasse 92, CH-8006 Zurich
T: +41 44 360 25 25

19:00 **Dinner, Restaurant Kreis 6**
Scheuchzerstrasse 65, CH-8006 Zurich
T: +41 44 362 80 06

Thursday, 18 September 2014

ETH Zurich Center, Maschinenlabor, Room ML E 13
Sonnegstrasse 3, CH-8092 Zurich

09:00 **Opening “CODE Athens Rail&City” Initiative**
B. Scholl

09:15 **Introduction**
I. Frezadou

09:30 **Presentation:**
Railway development in Greece with focus to corridor of Athens/Piraeus and the railway station of Larisis
G. Pantelas

10:10	Presentation: Spatial development in Athens with focus to corridor of Athens/Piraeus and the railway station of Larisis <i>I. Kalogianni</i>
10:50	Coffee Break
11:05	Presentation: Chances of spatial and railway development in and for Athens <i>K. Moraitis</i>
11:45	Reserve
12:25	Lunch
14:00	Introduction: Symposium (April 2015)/ Joint seminar (June 2015) <i>B. Scholl/ I. Frezadou/ A. Peric/ M. Soltaniehha</i>
14:30	Symposium (April 2015) Draft program <i>B. Scholl/ I. Frezadou/ A. Peric/ M. Soltaniehha</i>
15:00	Coffee Break
15:30	Joint seminar (June 2015) Draft program/ Task description CODE Athens <i>B. Scholl/ I. Frezadou/ A. Peric/ M. Soltaniehha</i>
16:30	Final discussion, outlook for Friday tour <i>B. Scholl</i>
17:00	Reserve
19:00	Dinner, Wirtschaft Neumarkt <i>Neumarkt 5, CH-8001 Zurich</i> <i>T: +41 44 252 79 39</i>
Friday, 19 September 2014 City Center tour and Oerlikon	
08:00	Tram from Hotel Rex to Railway Station Wiedikon
08:30	Tour: Wiedikon to HB (Main Railway Station); Tour: HB to Oerlikon
10:00	Overview and field research <i>Infocenter Station Oerlikon</i>
12:00	Apéro riche <i>Swissôtel Oerlikon</i> <i>Schulstrasse 44, CH-8050 Zurich</i> <i>T: +41 44 317 31 11</i>
13:00	Final discussion
14:30	End of the meeting

Chapter 4: International Symposium on Railway and City Development, Athens

Content: An international public event has been considered for further exchange on the topic. In this symposium several examples from other European metropolitan areas, such as Berlin, Madrid, Vienna and Zurich will be presented to show the successful practices on integrated railway and urban development, which can serve as an engine for strategic investments, often realized in public private partnerships. The presence of the international symposium 'Rail&City' should stimulate public debate on the challenging situation in Athens. Participants from Berlin, Madrid, Vienna and Zurich who are involved in similar projects will share the challenges, possibilities and results of 'Rail&City' projects and discuss their experiences with the responsible actors from Athens.

This exchange should provide a solid basis for a better understanding of the integrated planning approach, which could make a breakthrough for any innovative solutions accepted by the inhabitants, the politicians and the various institutions and actors that will have to be involved. In June 2015, a joint seminar week of students from ETH Zurich and students from the National Technical University of Athens and the University of Patras will research new ideas for the further development of the railway corridor in Athens (CODE ATHENS). Professors and experts will accompany and support the student working groups.

Date: Thursday, 14.April.2015 – Friday, 21.April.2015 (2-day Symposium on 16th-17th April)

Organisation Team Members:

- **Prof. Dr. B. Scholl**
ETH, IRL
- **I. Frezadou**
Architect & Spatial Planner
- **M. Soltaniehha**
ETH, IRL
- **Dr. R. Signer**
ETH, IRL
- **Dr. A. Peric**
ETH, IRL
- **Y. Largiader**
Secretary of the ETH, IRL

Speakers:

- **Antonio Aguilar**
Director General, RENFE, Madrid
- **Irini Frezadou**
Architect & Spatial Planner, NDS/ETH
- **Mathieu Grosch**
EU Commission, Coordinator of TEN-T corridor orient/east-med
- **Dr. Johann Hartig**
Former Director Ministry of Transport, Austria
- **D. Karydis**
Professor, NTU Athens
- **Joachim Kenzler**
Former Director, DB Real Estate, Berlin
- **Gion Letta**
Former Project Manager, SBB, Zurich
- **Dr. Kostas Moraitis**
Professor of Urban and Landscape Design, NTU Athens
- **City of Athens**
NN
- **Ministry**
NN
- **Peter Noser**
Former Deputy Director, Office for Urban Planning, City of Zurich
- **Vassilis Pappas**
Professor for Spatial Planning University of Patras
- **Annalie Schoen**
Director Senate Department for Urban Development and Environment Berlin
- **Dr. Bernd Scholl**
Professor for Spatial Planning, ETH Zurich
- **Albert Speer**
Prof. em., Albert Speer Foundation, Frankfurt
- **Panagiotis Alk.Theofanopoulos**
President of OSE
- **Alfonso Vegara**
President Fundacion Metropoli, Madrid
- **Maria Vassilakou**
Deputy Mayor of Vienna
- **City of Piraeus**
NN

Program:

Thursday, 16 April 2015	
08:30	Welcome, coffee and registration
09:00	Welcome speeches: <i>B. Scholl, K. Moraitis, V. Pappas</i> <i>Moderation: I. Frezadou</i>
09:20	Welcome, Ministry NN, to be asked
09:30	Welcome, Mayor of Athens, to be asked
09:40	Welcome, Mathieu Grosch
09:50	Welcome, Panagiotis Alk.Theofanopoulos
10:00	Central Station and City Development in Vienna, Maria Vasilakou
10:20	Realising the Central Station of Vienna, <i>Johann Hartig</i>
10:40	Vienna: Questions and Answers
11:00	Coffee Break
11:30	Development of the Railway System in Zurich, <i>Gion Letta</i>
11:50	Rail&City in Zurich, Chances and Challenges, <i>Peter Noser</i>
12:10	Zurich: Questions and Answers
12:30	Lunch
14:00	Urban Development around the Central Station of Berlin, <i>Annalie Schoen</i>
14:20	Real Estate near the Central Station of Berlin, <i>Joachim Kenzler</i>
14:40	Berlin: Questions and Answers
15:00	Coffee Break
15:30	Atocha Railway Station Madrid, Important Mode of the Diagonal, <i>Alfonso Vegara</i>
15:50	Development of Railway in Madrid, <i>Antonio Aguliar</i>
16:10	Madrid: Questions and Answers
16:30	Closing discussion
17:15	Reception at Acropolis Museum, Welcome by Swiss Ambassador, NN, to be asked
20:30	Symposium Dinner for Speakers and Students

Friday, 17 April 2015

City Center tour and Oerlikon

09:00	Welcome, Kostas Moriatis <i>Moderation: I. Frezadou</i>
09:10	Introduction to Athens, D. Karydis
09:30	The City of Athens, NN, to be asked
09:50	The City of Piraeus, NN, to be asked
10:10	Development of Railway Athens – Piraeus, OSE, NN, to be asked
10:30	Reserve
10:50	Coffee Break
11:20	Roundtable with representatives of the cities and the EU coordinator, <i>Moderation: Prof. B. Scholl</i>
12:30	Closing speeches <i>Albert Speer</i>
12:40	The City of Athens as host, NN
12:50	Prof. K. Moraitis
13:00	Apéro riche at Acropolis Museum
14:30	Close of the Rail&City International Symposium

Chapter 5: Future work

5.1 Focus Groups

Content: Prior to the 'International Symposium in Athens' in April 2015, two focus groups from the Chair of Spatial Development at ETH Zurich will discuss the topic toward providing concrete strategy and solution alternatives for Athens railway and spatial development. The groups will later on participate in the 'Joint Seminar Week' and lead the students for the most efficient teamwork and solid solutions.

Date: Thursday, 16.April.2015 – Friday, 17.April.2015

Focus Group Members:

- **Prof. Dr. B. Scholl**
ETH, IRL
- **Dr. Markus Nollert**
ETH, IRL
- **M. Soltaniehha**
ETH, IRL
- **Theodora Papamichail**
ETH, IRL
- **Dr. R. Signer**
ETH, IRL
- **Dr. A. Peric**
ETH, IRL
- **NN**

5.2 Joint Seminar Week – Athens

Content: The event is about students' participation in the problem-solving process of the project. Students in different groups will work on the same problem for a week in Athens, Greece, and should conclude their best strategy option within this one-week. Professors and experts will provide the students with lectures, workshops, and discussion groups.

Date: Thursday, 16.April.2015 – Friday, 17.April.2015

Organisation team:

- **Prof. Dr. B. Scholl**
ETH, IRL
- **I. Frezadou**
Architect & Spatial Planner
- **M. Soltaniehha**
ETH, IRL
- **Theodora Papamichail**
ETH, IRL
- **Dr. R. Signer**
ETH, IRL
- **Dr. A. Peric**
ETH, IRL
- **Dr. Markus Nollert**
ETH, IRL
- **Y. Largiader**
Secretary of the ETH, IRL